

INSTALLATION INSTRUCTIONS

CREATION & SMARTFIX

This installation document refers to the following products:

Product	Size	Thickness	Installation direction
Creation Living	See product TDS	2 mm	Same
SmartFix Underlayment	3' 3" x 24' 7"	2 mm	90° from planks

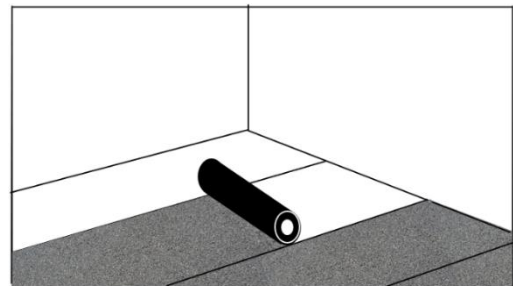
Important Note: Before installing, refer to Gerflor USA Installation Handbook for acclimation, job site conditions, subfloor prep, and other general installation recommendations.

1. GENERAL INFORMATION

- 1.1. Gerflor flooring products are formulated to withstand high moisture conditions. To perform as designed, the concrete should be properly prepared to create a contaminate free and porous substrate.
- 1.2. Gerflor flooring products are not designed to withstand hydrostatic or osmotic pressure.
- 1.3. *The guidelines offered within this document are not intended to be all inclusive. Only qualified, professional flooring technicians experienced in the field of resilient flooring should proceed with this installation system.*
- 1.4. It is recommended to mechanically prepare the concrete via grinding or bead blasting the surface to achieve a CSP 1+, clean and porous substrate.
- 1.5. Moisture and pH testing must be performed in accordance with ASTM F710-22
- 1.6. Adhesive bond tests are recommended to ensure adequate bonding to the substrate.
- 1.7. Do not install material that has visible defects or damage. A contractor that installs material that has visible defects or damage assumes responsibility for that material.

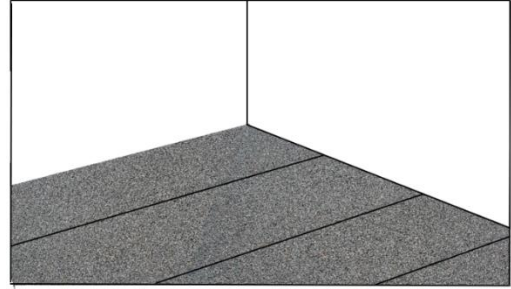
2. INSTALLATION OF THE SMART FIX UNDERLAYMENT

- 2.1. Smart Fix Underlayment has one side pre-adhered and the other side without any adhesive.
- 2.2. The side without adhesive will face the subfloor and must be glued down.
- 2.3. A gap of 1/4" minimum must be left on the perimeter of the walls.
- 2.4. Use Gerfix Spray or TPS+ adhesive to adhere the Smart Fix Underlayment to the subfloor.
- 2.5. Make sure that the seams are butted tight and that there are no gaps at the seams.



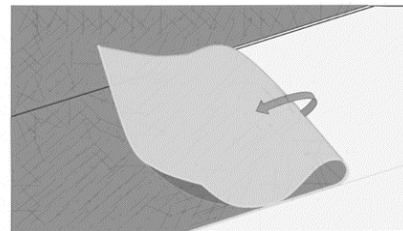
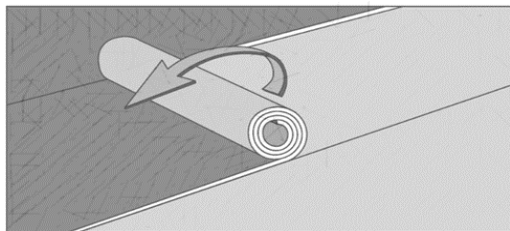
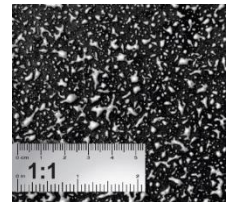
INSTALLATION INSTRUCTIONS CREATION & SMARTFIX

- 2.6. Head seams must be cut in a serpentine pattern to avoid aligning these seams right under a seam between planks.
- 2.7. Once the underlayment is applied into the adhesive, use a 100-lbs sectional roller for proper adhesion.
- 2.8. Always roll seams, at the walls, and under toe kicks with a hand roller to ensure 100% transfer of adhesive.



3. INSTALLING SMARTFIX USING GERFIX SPRAY ADHESIVE

- 3.1. Always refer to the **Gerfix Spray Adhesive Technical Data Sheet**
- 3.2. Recommended spray pattern: (150 to 185 sq. ft. per can)
- 3.3. Ensure substrate, underlayment and surrounding areas are clean and dust free.
- 3.4. Wipe hand across the substrate surface to verify for dust.
- 3.5. If dust transfers, the substrate is not clean.
- 3.6. Damp-mop substrate if dust is present.
- 3.7. Protect from overspray with a spray shield, drop cloths, paper, or masking tape.
- 3.8. Starting from the center lines and working outward, apply the adhesive to the subfloor.



- 3.9. Shake aerosol can well. Remove white cap.
- 3.10. To ensure uniform adhesion of the entire surface, spray a workable amount of adhesive at one time.
- 3.11. Stand straight up to spray. Hold can upside down, approximately 20-30 inches horizontally from the substrate, aim at floor and press tip with finger.
- 3.12. Walk right to left smoothly to achieve results as seen on photo.
- 3.13. Adhesive should spray out in a wide mist and fall like snow.
- 3.14. Spraying in a sweeping motion may result in an inconsistent spray pattern.
- 3.15. Excess buildup or inconsistent spray pattern on substrate may cause telegraphing.
- 3.16. Avoid extremely heavy application.
- 3.17. To ensure optimal spray pattern, remove any adhesive build up that may occur during the application process.



- 3.18. If overspray occurs, it may be removed with a damp cloth while the adhesive is still wet.
- 3.19. High humidity and/or low temperature increases tack time.
- 3.20. Once the adhesive is dry to the touch, immediately install the flooring. While open, ensure that adhesive is not contaminated by dust.
- 3.21. Roll Smart Fix with a 3 section 100-lbs roller within 1 hour after installation to complete the bonding process.
- 3.22. Always roll seams, at the walls, and under toe kicks with a hand roller to ensure 100% transfer of adhesive.
- 3.23. Floor is open to all traffic immediately after installation of LVT.

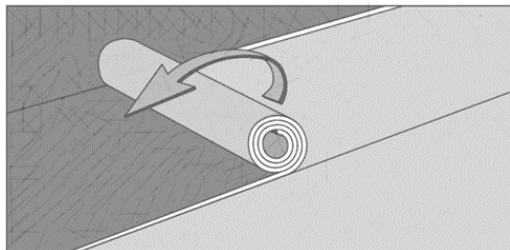


4. INSTALLING SMARTFIX USING GERFIX TPS+ ACRYLIC ADHESIVE

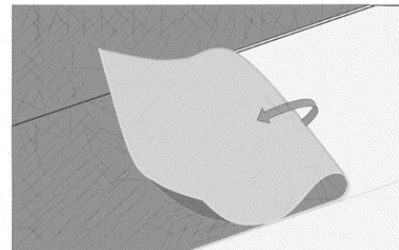
- 4.1. Always refer to the **Gerfix TPS+ Adhesive Technical data Sheet**
- 4.2. Recommended trowel size is 1/32" x 1/16" x 1/32", covering from 170 to 220 sq. ft. per US gallon.
- 4.3. Starting from the center line and working outward, fold back or roll back the smart fix (width) halfway and apply the adhesive to the subfloor.



Roll back method



Fold back method



- 4.4. Never pre-cut material to final trim until it is placed into the adhesive. Leave material 2"-3" longer for trimming after placement.
- 4.5. To ensure uniform adhesion of the entire surface, apply a workable amount of adhesive at one time.
- 4.6. Maintain a uniform spread rate. Replace trowel (or trowel blade) with every pail used.
- 4.7. Immediately after troweling the adhesive onto the substrate use a medium napped paint roller saturated with adhesive to flatten out visible trowel marks and even out the adhesive. **A double arm roller frame is recommended to ensure an even coat of adhesive.**
- 4.8. Once the adhesive is applied, fold back or roll back the flooring into the still wet adhesive for **4"-6"**. This will ease the fold-back or roll back of the second half and it will help avoid an overlap of the glue-line. **Should this method not be followed, the glue-line mark may telegraph through the flooring.**



INSTALLATION INSTRUCTIONS

CREATION & SMARTFIX

- 4.9. "Open time" of the adhesive is dependent upon porosity of the substrate, temperature, and humidity. It is important that the installers familiarize themselves with the adhesive before starting the installations.

<i>Application Characteristics over Porous Substrates (Non-Porous-see note below)</i>		
	<i>Open Time*</i>	<i>Working Time**</i>
Gerflor Smart Fix Underlayment	20 to 40 minutes (to reach a tacky state***)	Up to 1.5 hours

* **Open Time:** is the waiting time required before installing flooring.

** **Working time:** is the window of time for the adhesive to accept flooring.

*** **Tacky:** When adhesive starts to become translucent and there is light transfer to the fingers when slightly touched

Note: For Non-Porous substrates such as existing flooring or metal, let the adhesive dry completely, with no transfer to the fingers when touched, then immediately install the flooring, and roll with a 100lb. roller.

- 4.10. When installing, always work to have complete sheets glued at the end of the day.
- 4.11. To reduce the risk of bubbles, the roll back method is the most recommended method of installation.
- 4.12. By keeping the roll tight and maintaining constant pressure while unrolling into the adhesive, the risk for bubbles will be minimal.
- 4.13. The fold back method is acceptable, but care must be taken to not unfold it back too quickly.
- 4.14. Once the smart fix is placed into the adhesive, immediately roll thoroughly with a 3 section 100-lbs roller in both directions.
- 4.15. Always roll seams, at the walls, and under toe kicks with a hand roller to ensure 100% transfer of adhesive.
- 4.16. Continue laying sheets ensuring the seams are butted tight and that there are no gaps.
- 4.17. During the installation, with the lights on and off, always double check the flooring for bubbles with portable, ambient, and/or fixed lighting.
- 4.18. Avoid adhesive displacement by prohibiting traffic for a period of 24 hours and 72 hours for rolling loads.

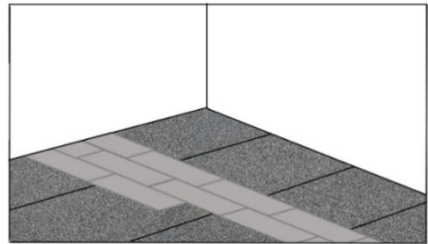
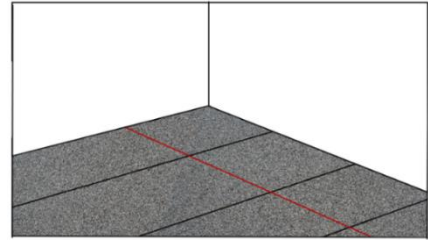
5. INSTALLATION OF PLANKS

- 5.1. Boxes are clearly marked with batch numbers and the product should be checked for match before installing.
- 5.2. Inspect all materials carefully to verify that correct colors, lot number, patterns, quality, and quantities have been shipped as ordered. Do not install, cut, or fit any material that has visible defects.
- 5.3. **A contractor that installs material that has visible defects or damage without prior consent of Gerflor deems the product acceptable for installation and therefore accepts full responsibility for said material.**

INSTALLATION INSTRUCTIONS

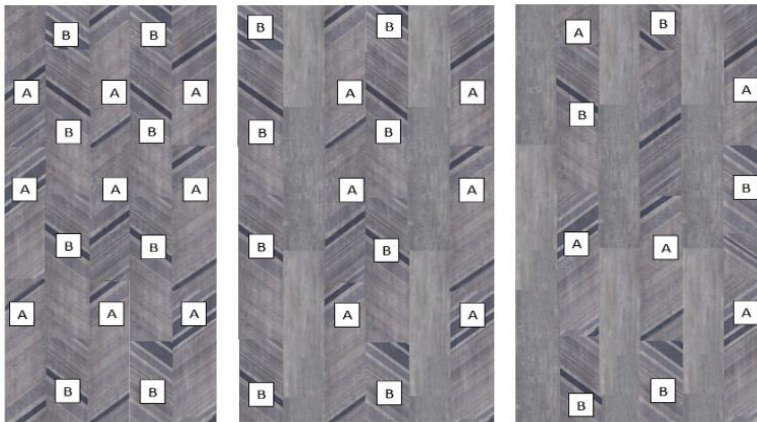
CREATION & SMARTFIX

- 5.4. Before marking the center line, peel the scrim of self-adhered underlayment a few inches along the line to be marked.
- 5.5. Chalk the starting line so it is parallel to the length of the room.
- 5.6. Position center lines to allow the perimeter planks to be \geq to $\frac{1}{2}$ plank.
- 5.7. Mix planks from different boxes to obtain a consistent layout.
- 5.8. Be certain the planks are installed right on the center lines.
- 5.9. Peel the scrim off the SmartFix to reveal the sticky part of the underlayment
- 5.10. After the first row of planks are in place, begin laying planks outward.
- 5.11. Press planks firmly against adjoining planks and press into the adhesive.
- 5.12. A gap of $\frac{1}{4}$ " minimum must be left on the perimeter of the walls.
- 5.13. Keep peeling the scrim as the planks are installed.
- 5.14. Begin stair-stepping the planks into the field area.
- 5.15. Once complete, roll with a 100 lb. roller to ensure proper bonding.



6. HERRINGBONE RECOMMENDED LAYOUT

Herringbone only or suggested Herringbone mixed with regular planks



7. ONCE THE INSTALLATION IS COMPLETED

- 7.1. Perform a visual inspection of the project.
- 7.2. Verify every welded seam.
- 7.3. Repair every imperfection before leaving the project.



INSTALLATION INSTRUCTIONS

CREATION & SMARTFIX

- 7.4. Make sure that every vertical obstacle such as doorframes are well trimmed and sealed with an acrylic, silicone, or equivalent sealant product.
- 7.5. To maximize the aesthetic appearance and serviceability of the newly installed flooring, provide your customer with a copy of the **Gerflor USA Maintenance Instructions**.